

# Network Converters

For details on this product please refer to our website.  
[www.orientalmotor.com/catalog](http://www.orientalmotor.com/catalog)



For detailed information about regulations and standards, please see the Oriental Motor website.



**NETC01-CC**      **NETC01-M2**      **NETC01-ECT**



View Expanded Product Information, Specifications, CAD, Accessories & more online. Visit [www.orientalmotor.com/catalog](http://www.orientalmotor.com/catalog) or use the QR code and select "Network Converters".

Network converters convert host communication protocol to Modbus (RTU) communication protocol. Use a network converter to control Oriental Motor's RS-485 communication-compatible products within the host communication environment.

## Features

### Reduced Wiring and Space Saving is Possible

For connection to RS-485 communication-compatible products, wiring adjustments can be done with a single included cable. Connection is also possible with a commercial LAN cable (straight wiring).



### Multi-Axis Connection is Possible

Multi-axis connection is possible for RS-485 communication-compatible products.

- CC-Link-Compatible: 12 axes max.
- MECHATROLINK-II-Compatible: 16 axes max.
- EtherCAT-Compatible: 16 axes max.

## Product Line

Network Type	Product Name	List Price
CC-Link-Compatible	<b>NETC01-CC</b>	\$282.00
MECHATROLINK-II-Compatible	<b>NETC01-M2</b>	\$358.00
EtherCAT-Compatible	<b>NETC01-ECT</b>	\$245.00

The following items are included with each product.  
 Network Converter, RS-485 Communication Cable, Power Connector, Operating Manual, CC-Link Communication Connector (**NETC01-CC** only)

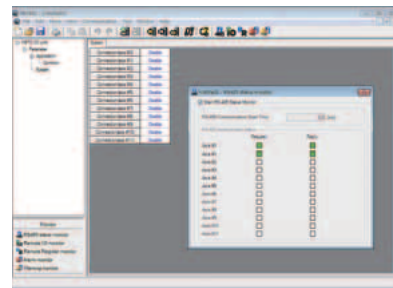
## Setting Method for Various Parameters

A control module **OPX-2A** (sold separately) or data setting software **MEXE02** is required for setting a network converter.

A control module **OPX-2A** and data setting software **MEXE02** can also be used to monitor the time it takes to communicate with each axis.



Control Module **OPX-2A**



Data Setting Software **MEXE02**

### Note

- A control module **OPX-2A** or data setting software **MEXE02** is required for setting **NETC01-M2**
- The data setting software **MEXE02** can be downloaded from the website. Visit our website, or contact the nearest Oriental Motor sales office. <http://www.orientalmotor.com/>

### • ESI File

An ESI file is arranged so that **NETC01-ECT** can be used more easily. The ESI file can be downloaded from our website.



For details (specifications, characteristics, dimensions and others) on these products please refer to either to our website, contact technical support or your nearest Oriental Motor sales office.

[www.orientalmotor.com/catalog](http://www.orientalmotor.com/catalog)