



Technical Reference

Selection Calculations	H-2
Motors	H-2
Linear & Rotary Actuators	H-17
Cooling Fans	H-32
Service Life	H-33
Stepper Motors	H-37
Servo Motors	H-45
Standard AC Motors	H-47
Brushless Motors/ AC Speed Control Motors	H-49
Gearheads	H-51
Linear & Rotary Actuators	H-57
Cooling Fans	H-63

Selection Calculations
Motors
Linear & Rotary Actuators
Cooling Fans
Service Life
Stepper Motors
Servo Motors
Standard AC Motors
Brushless Motors/AC Speed Control Motors
Gearheads
Linear & Rotary Actuators
Cooling Fans

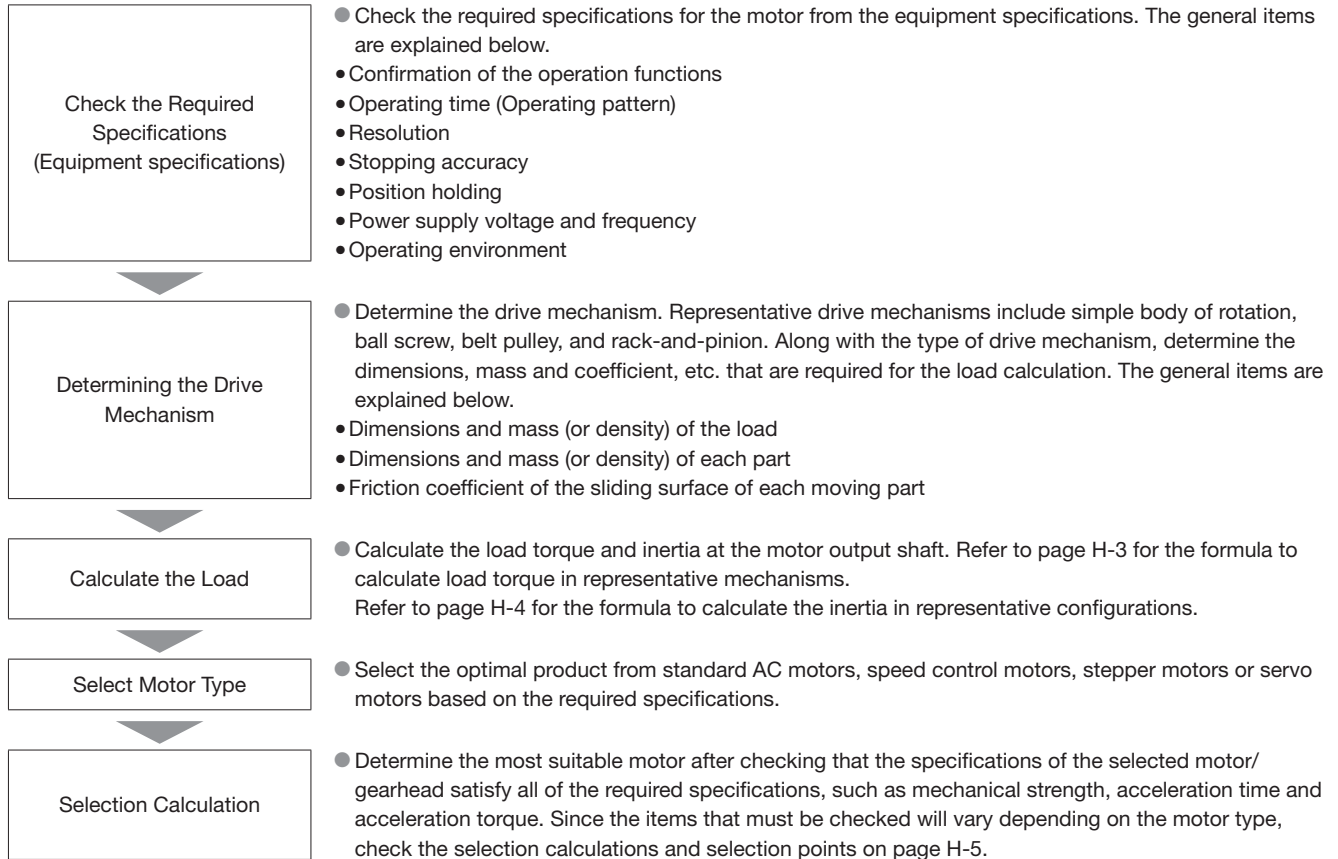
Selection Calculations For Motors

Selecting a motor that satisfies the specifications required by your equipment is an important key to ensuring the desired reliability and economic efficiency of the equipment.

This section introduces the procedure to select the ideal motor, selection calculations, key points of selection and selection examples.

Selection Procedure

An overview of the selection procedure is explained below.



Sizing and Selection Service

We provide selection services for motor selection from load calculations that requires time and effort.

● Internet

Simple requests for motors can be made using the selection form on our website.

www.orientalmotor.eu

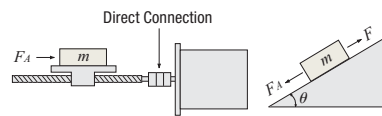
Formula for Load Torque T_L [N·m] for Each Drive Mechanism

Formula for Load Torque

◇ Ball Screw Drive

$$T_L = \left(\frac{F \cdot P_B}{2\pi \cdot \eta} + \frac{\mu_0 \cdot F_0 \cdot P_B}{2\pi} \right) \cdot \frac{1}{i} \quad [\text{N}\cdot\text{m}] \quad \text{①}$$

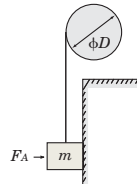
$$F = F_A + m \cdot g \cdot (\sin \theta + \mu \cdot \cos \theta) \quad [\text{N}] \quad \text{②}$$



◇ Pulley Drive

$$T_L = \frac{\mu \cdot F_A + m \cdot g}{2\pi} \cdot \frac{\pi \cdot D}{i}$$

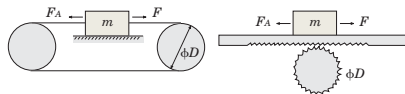
$$= \frac{(\mu \cdot F_A + m \cdot g) D}{2 \cdot i} \quad [\text{N}\cdot\text{m}] \quad \text{③}$$



◇ Wire and Belt Drive, Rack-and-Pinion Drive

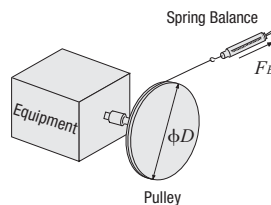
$$T_L = \frac{F}{2\pi \cdot \eta} \cdot \frac{\pi \cdot D}{i} = \frac{F \cdot D}{2 \cdot \eta \cdot i} \quad [\text{N}\cdot\text{m}] \quad \text{④}$$

$$F = F_A + m \cdot g \cdot (\sin \theta + \mu \cdot \cos \theta) \quad [\text{N}] \quad \text{⑤}$$



◇ Actual Measurement Method

$$T_L = \frac{F_B \cdot D}{2} \quad [\text{N}\cdot\text{m}] \quad \text{⑥}$$



F : Force of moving direction [N]

F_0 : Preload [N] ($\approx \frac{1}{3}F$)

μ_0 : Internal friction coefficient of preload nut (0.1~0.3)

η : Efficiency (0.85~0.95)

i : Gear ratio (This is the gear ratio of the mechanism -and not the gear ratio of an Oriental Motor's gearhead.)

P_B : Ball screw lead [m/rev]

F_A : External force [N]

F_B : Force when main shaft begins to rotate [N] ($F_B = \text{Spring balance value [kg]} \times g \text{ [m/s}^2\text{]}$)

m : Total mass of table and load [kg]

μ : Friction coefficient of sliding surface

θ : Inclination angle [°]

D : Final pulley diameter [m]

g : Gravitational acceleration [m/s²] (9.807)

Selection Calculations

Motors

Linear & Rotary Actuators

Cooling Fans

Service Life

Stepper Motors

Servo Motors

Standard AC Motors

Brushless Motors/AC Speed Control Motors

Gearheads

Linear & Rotary Actuators

Cooling Fans

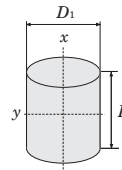
Formula for Inertia J [kg·m²]

● **Formula for the Inertia**

◇ **Inertia of a Cylinder**

$$J_x = \frac{1}{8} m \cdot D_1^2 = \frac{\pi}{32} \rho \cdot L \cdot D_1^4 \text{ [kg·m}^2\text{]} \dots\dots\dots ⑦$$

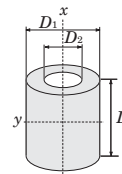
$$J_y = \frac{1}{4} m \left(\frac{D_1^2}{4} + \frac{L^2}{3} \right) \text{ [kg·m}^2\text{]} \dots\dots\dots ⑧$$



◇ **Inertia of a Hollow Cylinder**

$$J_x = \frac{1}{8} m (D_1^2 + D_2^2) = \frac{\pi}{32} \rho \cdot L (D_1^4 - D_2^4) \text{ [kg·m}^2\text{]} \dots\dots\dots ⑨$$

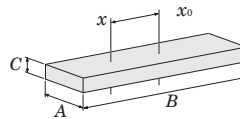
$$J_y = \frac{1}{4} m \left(\frac{D_1^2 + D_2^2}{4} + \frac{L^2}{3} \right) \text{ [kg·m}^2\text{]} \dots\dots\dots ⑩$$



◇ **Inertia on Off-Center Axis**

$$J_x = J_{x0} + m \cdot l^2 = \frac{1}{12} m (A^2 + B^2 + 12 \cdot l^2) \text{ [kg·m}^2\text{]} \dots\dots\dots ⑪$$

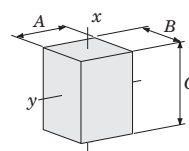
l : Distance Between x and x_0 Axes [m]



◇ **Inertia of a Rectangular Pillar**

$$J_x = \frac{1}{12} m (A^2 + B^2) = \frac{1}{12} \rho \cdot A \cdot B \cdot C (A^2 + B^2) \text{ [kg·m}^2\text{]} \dots\dots\dots ⑫$$

$$J_y = \frac{1}{12} m (B^2 + C^2) = \frac{1}{12} \rho \cdot A \cdot B \cdot C (B^2 + C^2) \text{ [kg·m}^2\text{]} \dots\dots\dots ⑬$$



◇ **Inertia of an Object in Linear Motion**

$$J = m \left(\frac{A}{2\pi} \right)^2 \text{ [kg·m}^2\text{]} \dots\dots\dots ⑭$$

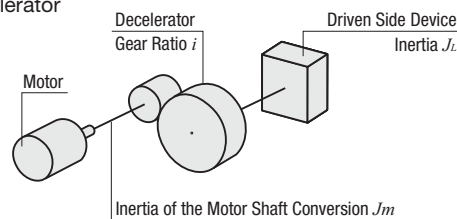
A : Unit Movement [m/rev]

Conversion formula for the inertia of the motor shaft when using a decelerator

$$J_m = \frac{1}{i^2} J_L$$

Formula for the relation between J and GD^2

$$J = \frac{1}{4} GD^2$$



Density

- Iron $\rho = 7.9 \times 10^3$ [kg/m³]
- Stainless steel (SUS304) $\rho = 8.0 \times 10^3$ [kg/m³]
- Aluminum $\rho = 2.8 \times 10^3$ [kg/m³]
- Brass $\rho = 8.5 \times 10^3$ [kg/m³]
- Nylon $\rho = 1.1 \times 10^3$ [kg/m³]

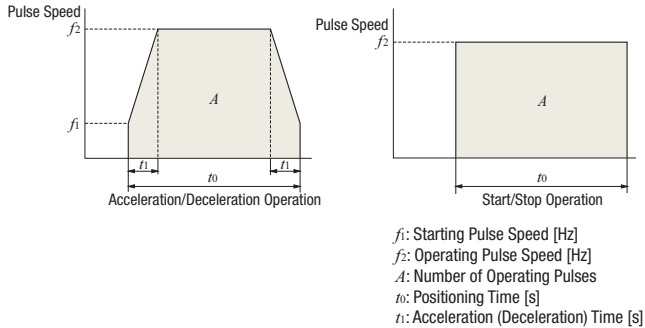
- J_x : Inertia on x -axis [kg·m²]
- J_y : Inertia on y -axis [kg·m²]
- J_{x0} : Inertia on x_0 -axis (centered axis) [kg·m²]
- m : Mass [kg]
- D_1 : Outer diameter [m]
- D_2 : Inner diameter [m]
- ρ : Density [kg/m³]
- L : Length [m]

Motor Selection Calculations

The following explains the required formulas for controlling a stepper motor or servo motor based on pulse signal.

Operating Pattern

For stepper motors, the pattern for acceleration/deceleration operation in the figure on the left is commonly used as operating patterns on pulse speed. The pattern for start/stop operation in the figure on the right can be used when the operating speeds are low and the load inertia is small.



Formula for the Number of Operating Pulses A [Pulse]

The number of operating pulses is expressed as the number of pulse signals that add up to the angle that the motor must rotate to get the load from point A to point B.

$$A = \frac{l}{l_{rev}} \cdot \frac{360^\circ}{\theta_s}$$

l : Traveling Amount from point A to point B [m]
 l_{rev} : Traveling Amount per Motor Rotation [m/rev]
 θ_s : Step Angle [°]

Formula for the Operating Pulse Speed f_2 [Hz]

The operating pulse speed can be obtained from the number of operating pulses, the positioning time and the acceleration (deceleration) time.

① For Acceleration/Deceleration Operation

The level of acceleration (deceleration) time is an important point in the selection. The acceleration (deceleration) time cannot be set easily, because it correlates with the acceleration torque and acceleration/deceleration rate.

Initially, as a reference, calculate the acceleration (deceleration) time at roughly 25% of the positioning time. (The calculation must be adjusted before the final decision can be made.)

$$t_1 = t_0 \times 0.25$$

$$f_2 = \frac{A - f_1 \cdot t_1}{t_0 - t_1}$$

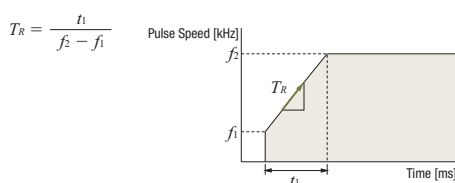
② For Start/Stop Operation

$$f_2 = \frac{A}{t_0}$$

Formula for the Acceleration/Deceleration Rate T_R [ms/kHz]

The acceleration/deceleration rates are the setting values used for the Oriental Motor's controllers.

The acceleration/deceleration rate indicates the degree of acceleration of pulse speed and is calculated using the formula shown below.



- Calculate the pulse speed in full step conversion.
- For this formula, the unit for speed is [kHz] and the unit for time is [ms].

Conversion Formula for the Operating Speed N_M [r/min] from the Operating Pulse Speed f_2 [Hz]

$$N_M = f_2 \cdot \frac{\theta_s}{360} \cdot 60$$

Calculate the Load Torque

Refer to formulas on page H-3.

Formula for the Acceleration Torque T_a [N·m]

If the motor speed is varied, the acceleration torque or deceleration torque must always be set.

The basic formula is the same for all motors. However, use the formulas below when calculating the acceleration torque for stepper motors on the basis of pulse speed.

<Common Basic Formula for All Motors>

$$T_a = \frac{(J_o \cdot f^2 + J_L)}{9.55} \cdot \frac{N_M}{t_1}$$

J_o : Rotor Inertia [kg·m²]
 J_L : Total Inertia [kg·m²]
 N_M : Operating Speed [r/min]
 t_1 : Acceleration (Deceleration) Time [s]
 i : Gear Ratio

<When Calculating the Acceleration Torque for Stepper Motors on the Basis of Pulse Speed>

① For Acceleration/Deceleration Operation

$$T_a = (J_o \cdot f^2 + J_L) \cdot \frac{\pi \cdot \theta_s}{180} \cdot \frac{f_2 - f_1}{t_1}$$

② For Start/Stop Operation

$$T_a = (J_o \cdot f^2 + J_L) \cdot \frac{\pi \cdot \theta_s}{180 \cdot n} \cdot f_2^2 \quad n: 3.6^\circ / (\theta_s \cdot i)$$

Formula for the Required Torque T_M [N·m]

The required torque is calculated by multiplying the sum of load torque and acceleration torque by the safety factor.

$$T_M = (T_L + T_a) S_f$$

T_M : Required Torque [N·m]
 T_L : Load Torque [N·m]
 T_a : Acceleration Torque [N·m]
 S_f : Safety Factor

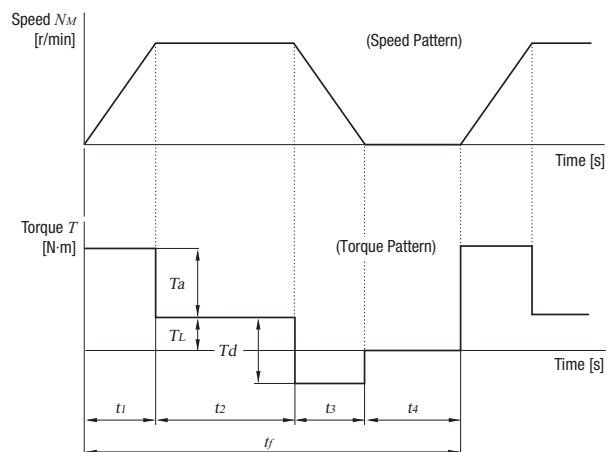
Formula for the Effective Load Torque T_{rms} [N·m]

Calculate the effective load torque when selecting the servo motors and **BXII** Series brushless motors.

When the required torque for the motor varies over time, determine if the motor can be used by calculating the effective load torque.

The effective load torque becomes particularly important for operating patterns such as fast-cycle operations where acceleration/deceleration is frequent.

$$T_{rms} = \sqrt{\frac{(T_a + T_L)^2 \cdot t_1 + T_L^2 \cdot t_2 + (T_d - T_L)^2 \cdot t_3}{t_f}}$$



Selection Calculations

Motors

Linear & Rotary Actuators

Cooling Fans

Service Life

Stepper Motors

Servo Motors

Standard AC Motors

Brushless Motors/AC Speed Control Motors

Gearheads

Linear & Rotary Actuators

Cooling Fans

Selection Points

Since there are differences in characteristics between standard AC motors, brushless motors, stepper motors and servo motors, there will also be differences in points (check items) when selecting a motor.

Standard AC Motors

① Speed Variation by Load

The actual speed of standard AC motors is 2~20% lower than its synchronous speed under the influence of the load torque. When selecting a standard AC motor, the selection should take this decrease in speed into account.

② Time Rating

There are differences in continuous rating and short time rating depending on the motor type, even for motors with the same output power. Motor selection should be based on the operating time (pattern).

③ Permissible Load Inertia of the Gearhead

If instantaneous stop (with brake pack, etc.), frequent intermittent operations or instantaneous bi-directional operation will be performed using a motor with a gearhead, an excessive load inertia may damage the gearhead. Selections must be made for these values, so that the load inertia does not exceed the permissible load inertia of the gearhead. (Refer to Page C-17)

Brushless Motors

① Permissible Torque

Brushless motor combination types with a dedicated gearhead installed are listed on the permissible torque table based on the output gear shaft. Select products in which the load torque does not exceed the permissible torque.

② Permissible Inertia

A permissible inertia is specified for the brushless motor for avoiding alarms using regenerative power during deceleration and for stable speed control. Select products in which the inertia does not exceed the permissible value. For the combination type, there is a permissible inertia combination type. Select products with values that do not exceed the values of the combination types.

③ Effective Load Torque

When operating the **BXII** Series with frequent starts and stops, make sure the effective load torque does not exceed the rated torque. If the rated torque is exceeded, the overload protective function activates and stops the motor.

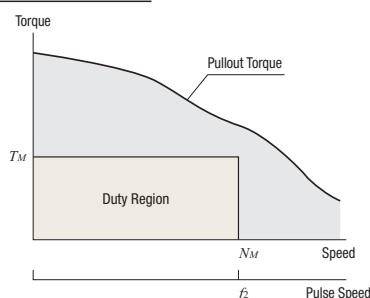
Stepper Motors

① Check the Required Torque

For stepper motors, select motors whose duty region (operating speed N_M (f_s) and the required torque T_M) falls within the pullout torque curve.

Safety Factor: S_f (Reference Value)

Product	Safety Factor (Reference Value)
αSTEP	1.5~2
Stepper Motors	2



② Considering Temperature Rise

The stepper motor will have an increase in temperature if operated continuously over a long period of time. Exceeding the temperature of heat-resistant class 130 (B) inside the motor may deteriorate its insulating performance. Temperature rise will vary based on the operating speed, load conditions and installation conditions. The stepper motor should be used at an operating duty of 50% or less. If the operating duty exceeds 50%, choose a motor with a sufficient margin of torque or use methods to lower the running current.

$$\text{Operating Duty} = \frac{\text{Running time}}{\text{Running} + \text{Stopping Time}} \times 100$$

③ Check the Acceleration/Deceleration Rate

If the duty region (operating speed N_M and the required torque T_M) of the stepper motor falls within the pullout torque curve, the specified equipment can be operated. Controllers, when set for acceleration/deceleration, adjust the pulse speed in steps using output pulse signals. Sudden acceleration/deceleration causes the pulse speed step to become large. Therefore, if large inertias are present in this condition, there is a possibility that the motor cannot be driven even when sudden acceleration/deceleration direction is given. Check that the reference values are equal to or higher than the acceleration/deceleration rates shown in the table so that the selected motor can be operated more reliably.

Acceleration/Deceleration Rate

(Combination reference values with **SCX11**)

Product	Frame Size	Acceleration/Deceleration Rate T_{RS} [ms/kHz]
αSTEP	20, 28 (30), 42 (40), 60, 85 (90)	0.5 or more
	0.36°/0.72°	20 or more
Stepper Motors	20 (φ22), 28 (30), 42, 56.4, 60	20 or more
	85 (90)	30 or more
0.9°/1.8°	20, 28, 35, 42, 50, 56.4, 60 (φ72)	50 or more
	85 (90)	75 or more

Also for the geared type, the acceleration/deceleration rates are equal to the values shown above. However, when using a half step or microstep motor, the conversion below is required.

$$T_{RS} \cdot \frac{\theta_s}{\theta_b} \cdot i$$

T_{RS} : Acceleration/Deceleration Rate [ms/kHz]

θ_s : Step Angle [°]

θ_b : Refer to Table Below

i : Gear Ratio of Geared Type

Coefficient

Product	θ_b
αSTEP	0.36°
0.72° Stepper Motors	0.72°
1.8° Stepper Motors	1.8°

④ Check the Inertia Ratio

Calculate the inertia ratio using the following formula:

$$\text{Inertia Ratio} = \frac{J_L}{J_0}$$

For Geared Motors

$$\text{Inertia Ratio} = \frac{J_L}{J_0 \cdot i^2} \quad i: \text{Gear Ratio}$$

Large inertia ratios in stepper motors cause large overshooting and undershooting during starting and stopping, which can affect rise times and settling times. Controllers, when set for acceleration/deceleration, adjust the pulse speed in steps using output pulse signals. Sudden acceleration/deceleration causes the pulse speed step to become large. Therefore, if the inertia ratio is large, operation may not be possible. Check that the reference values are less than or equal to inertia ratios shown in the table so that the selected motor can be operated more reliably.

Inertia Ratio (Reference values)

Product	Frame Size	Inertia Ratio
αSTEP	20, 28, 42, 60, 85	30 or less
	20, 28, 35	5 or less
Stepper Motors	42, 50, 56.4, 60, 85	10 or less

When the values in the table are exceeded, we recommend a geared type motor.

● Servo Motors

① Permissible Inertia

A permissible inertia is specified for the servo motor for stable control. The inertia of the servo motor must be lower than the permissible value.

Product	Permissible Load Inertia
NX Series	50 times the rotor inertia or less*

*Automatic tuning allows operation up to 50 times the rotor inertia; manual tuning allows operation up to 100 times the rotor inertia.

② Rated Torque

The motor can be driven when the ratio of load torque T_L and rated torque of the servo motor is 1.5~2 or more.

$$\frac{\text{Rated Torque}}{\text{Load Torque}} \geq 1.5 \sim 2$$

③ Maximum Instantaneous Torque

Check that the required torque is less than the maximum instantaneous torque of the servo motor. (Ensure that the safety factor of required torque S_f is at 1.5~2 or more.)

Note that the time that max. instantaneous torque can be used for varies depending on the motor.

Maximum Instantaneous Torque and Operating Time

Product	Operating Time	Maximum Instantaneous Torque
NX Series	Within approx. 0.5 seconds	At 3 times the rated torque (at rated speed)

④ Effective Load Torque

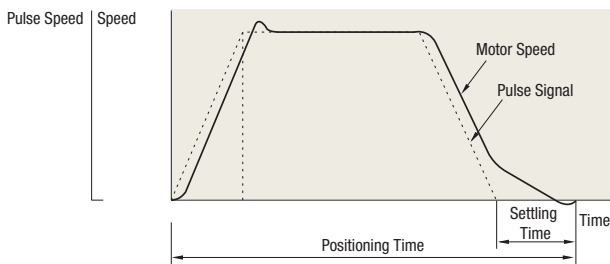
The motor can be driven when the effective load safety factor, which is the ratio of an effective load torque and a rated torque of servo motor, is 1.5~2 or more.

$$\text{Effective Load Safety Factor} = \frac{\text{Rated Torque}}{\text{Effective Load Torque}}$$

⑤ Settling Time

There is a time lag between a position command sent by pulse signal and the servo motor's actual operation. This difference is called the settling time.

Therefore, the real positioning time is the sum of the positioning time calculated from the operating pattern and the settling time.



● The factory setting for settling time on the **NX Series** is 60~70 ms. However, the settling time varies when the gain parameter is changed by the mechanical rigidity setting switch.

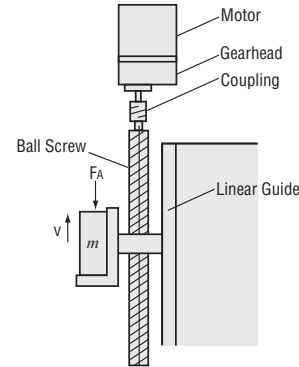
■ Selection Examples

● Ball Screw Mechanism

Using Standard AC Motors

(1) Specifications and Operating Conditions of the Drive Mechanism

This selection example demonstrates an electromagnetic brake motor for use on a table moving vertically on a ball screw. In this case, a motor must be selected that meets the following required specifications.



Total mass of the table and load	$m = 45$ [kg]
Table speed	$V = 12 \pm 2$ [mm/s]
External force	$F_A = 0$ [N]
Ball screw tilt angle	$\theta = 90$ [°]
Total length of ball screw	$L_B = 800$ [mm]
Ball screw shaft diameter	$D_B = 20$ [mm]
Ball screw lead	$P_B = 5$ [mm]
Distance moved for one rotation of ball screw	$A = 5$ [mm]
Ball screw efficiency	$\eta = 0.9$
Ball screw material	Iron (Density $\rho = 7.9 \times 10^3$ [kg/m ³])
Internal friction coefficient of preload nut	$\mu_0 = 0.3$
Friction coefficient of sliding surface	$\mu = 0.05$
Motor power supply	Single-Phase 230 VAC 50 Hz
Operating time	Intermittent operation, 5 hours/day
Load with repeated starts and stops	
Required load holding	

(2) Determine the Gear Ratio

$$\text{Speed at the gearhead output shaft } N_G = \frac{V \cdot 60}{A} = \frac{(12 \pm 2) \times 60}{5} = 144 \pm 24 \text{ [r/min]}$$

Because the rated speed for a 4-pole motor at 50 Hz is 1200 to 1300 [r/min], the gear ratio is calculated as follows:

$$\text{Gear ratio } i = \frac{1200 \sim 1300}{N_G} = \frac{1200 \sim 1300}{144 \pm 24} = 7.1 \sim 10.8$$

This gives us a gear ratio of $i = 9$.

(3) Calculate the Required Torque T_M [N·m]

$$\begin{aligned} \text{Force of moving direction } F &= F_A + m \cdot g (\sin \theta + \mu \cdot \cos \theta) \\ &= 0 + 45 \times 9.807 (\sin 90^\circ + 0.05 \cos 90^\circ) \\ &= 441 \text{ [N]} \end{aligned}$$

$$\text{Ball screw preload } F_0 = \frac{F}{3} = 147 \text{ [N]}$$

$$\begin{aligned} \text{Load torque } T'_L &= \frac{F \cdot P_B}{2\pi \cdot \eta} + \frac{\mu_0 \cdot F_0 \cdot P_B}{2\pi} \\ &= \frac{441 \times 5 \times 10^{-3}}{2\pi \times 0.9} + \frac{0.3 \times 147 \times 5 \times 10^{-3}}{2\pi} \\ &= 0.426 \text{ [N·m]} \end{aligned}$$

Consider the safety factor $S_f = 2$.

$$T_L = T'_L \cdot S_f = 0.426 \times 2 = 0.86 \text{ [N·m]}$$

Selection Calculations

Motors

Linear & Rotary Actuators

Cooling Fans

Service Life

Stepper Motors

Servo Motors

Standard AC Motors

Brushless Motors/AC Speed Control Motors

Gearheads

Linear & Rotary Actuators

Cooling Fans

Select an electromagnetic brake motor and gearhead satisfying the permissible torque of gearhead based on the calculation results (gear ratio $i = 9$, load torque $T_L = 0.86$ [N·m]) obtained so far.

Here, **4RK25GCM-9** are tentatively selected as the motor and gearhead respectively, by referring to the "Gearmotor – Torque Table" on page C-101.

Next, convert this load torque to a value on the motor output shaft to obtain the required torque T_M , as follows:

$$T_M = \frac{T_L}{i \cdot \eta_G} = \frac{0.86}{9 \times 0.9} = 0.106 \text{ [N·m]} = 106 \text{ [mN·m]}$$

(Gearhead efficiency $\eta_G = 0.9$)

The starting torque of the **4RK25GCM-9** motor selected earlier is 190 [mN·m]. Since this is greater than the required torque of 106 [mN·m], this motor can start the mechanism in question. Next, check if the gravitational load acting upon the mechanism in standstill state can be held with the electromagnetic brake. Here, the load equivalent to the load torque obtained earlier is assumed to act.

Torque T'_M required for load holding on the motor output shaft:

$$T'_M = \frac{T_L}{i} = \frac{0.86}{9} = 0.0956 \text{ [N·m]} = 95.6 \text{ [mN·m]}$$

The static friction torque generated by the electromagnetic brake of the **4RK25GCM-9** motor selected earlier is 100 [mN·m], which is greater than 95.6 [mN·m] required for the load holding.

(4) Check the Moment of Inertia J [kg·m²]

$$\begin{aligned} \text{Inertia of ball screw } J_B &= \frac{\pi}{32} \cdot \rho \cdot L_B \cdot D_B^4 \\ &= \frac{\pi}{32} \times 7.9 \times 10^3 \times 800 \times 10^{-3} \times (20 \times 10^{-3})^4 \\ &= 0.993 \times 10^{-4} \text{ [kg·m}^2\text{]} \\ \text{Inertia of table and load } J_m &= m \left(\frac{A}{2\pi}\right)^2 \\ &= 45 \left(\frac{5 \times 10^{-3}}{2\pi}\right)^2 \\ &= 0.286 \times 10^{-4} \text{ [kg·m}^2\text{]} \end{aligned}$$

Inertia at the gearhead shaft J is calculated as follows:

$$J = J_B + J_m = 0.993 \times 10^{-4} + 0.286 \times 10^{-4} = 1.28 \times 10^{-4} \text{ [kg·m}^2\text{]}$$

Here, permissible inertia of gearhead **4GV9B** (gear ratio $i = 9$) J_G is (Refer to page C-17):

$$J_G = 0.31 \times 10^{-4} \times 9^2 = 25.1 \times 10^{-4} \text{ [kg·m}^2\text{]}$$

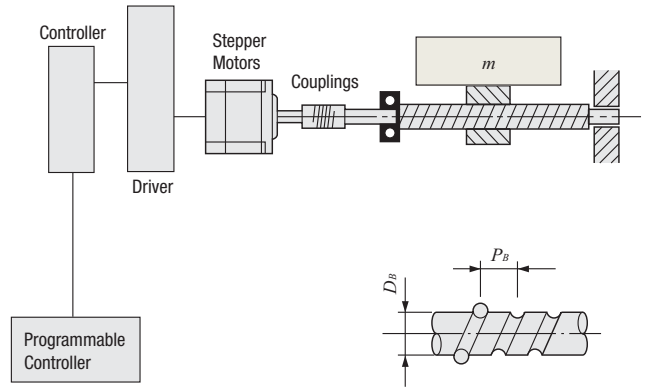
Therefore, $J < J_G$, the inertia is less than the permissible value, so there is no problem. There is margin for the torque, so the traveling speed is checked with the speed under no load (approximately 1470 r/min).

$$V = \frac{N_M \cdot P_B}{60 \cdot i} = \frac{1470 \times 5}{60 \times 9} = 13.6 \text{ [mm/s]} \quad N_M: \text{ Motor speed}$$

This confirms that the motor meets the specifications. Based on the above, **4RK25GCM-9** are selected as the motor and gearhead, respectively.

Using Stepper Motors

(1) Specifications and Operating Conditions of the Drive Mechanism



- Total mass of table and load $m = 40$ [kg]
- Friction coefficient of sliding surface $\mu = 0.05$
- Ball screw efficiency $\eta = 0.9$
- Internal friction coefficient of preload nut $\mu_0 = 0.3$
- Shaft diameter of ball screw $D_B = 15$ [mm]
- Overall length of ball screw $L_B = 600$ [mm]
- Ball screw material Iron (Density $\rho = 7.9 \times 10^3$ [kg/m³])
- Ball screw lead $P_B = 15$ [mm]
- Required resolution $\Delta l = 0.03$ [mm/step] (Feed per pulse)
- Feed $l = 180$ [mm]
- Positioning time $t_0 = 0.8$ seconds max.
- Inclination angle $\theta = 0$ [°]

(2) Calculate the Required Resolution θ_s

$$\begin{aligned} \theta_s &= \frac{360^\circ \cdot \Delta l}{P_B} \\ &= \frac{360^\circ \times 0.03}{15} = 0.72^\circ \end{aligned}$$

AZ Series stepper motor and driver package can be used. Changing or specifying the resolution is possible. The factory setting resolution can be changed from 0.36°/pulse → 0.72°/pulse.

(3) Determine an Operating Pattern (Refer to formula on page H-5)

① Formula for the number of operating pulses A [Pulse]

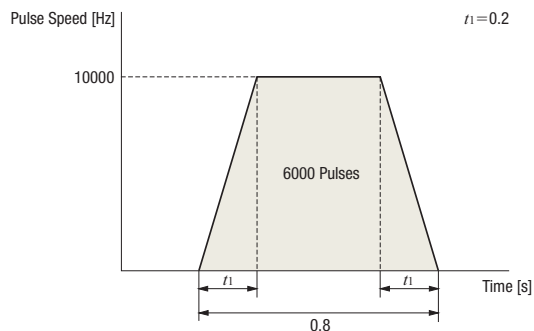
$$\begin{aligned} A &= \frac{l}{P_B} \cdot \frac{360^\circ}{\theta_s} \\ &= \frac{180}{15} \times \frac{360^\circ}{0.72^\circ} = 6000 \text{ [Pulse]} \end{aligned}$$

② Determine the acceleration (deceleration) time t_1 [s]
An acceleration (deceleration) time which is 25% of the positioning time is ideal.

$$t_1 = 0.8 \times 0.25 = 0.2 \text{ [s]}$$

③ Calculate the operating pulse speed f_2 [Hz].

$$\begin{aligned} f_2 &= \frac{A - f_1 \cdot t_1}{t_0 - t_1} \\ &= \frac{6000 - 0}{0.8 - 0.2} = 10000 \text{ [Hz]} \end{aligned}$$



④ Calculate the operating speed N_M [r/min]

$$N_M = \frac{\theta_s}{360^\circ} f_2 \cdot 60$$

$$= \frac{0.72^\circ}{360^\circ} \times 10000 \times 60$$

$$= 1200 \text{ [r/min]}$$

(4) Calculate the Required Torque T_M [N·m] (Refer to page H-5)

① Calculate the load torque T_L [N·m]

Force of Moving Direction $F = F_A + m \cdot g (\sin \theta + \mu \cos \theta)$

$$= 0 + 40 \times 9.807 (\sin 0^\circ + 0.05 \cos 0^\circ)$$

$$= 19.6 \text{ [N]}$$

Preload $F_0 = \frac{F}{3} = \frac{19.6}{3} = 6.53 \text{ [N]}$

Load Torque $T_L = \frac{F \cdot P_B}{2\pi \cdot \eta} + \frac{\mu_0 \cdot F_0 \cdot P_B}{2\pi}$

$$= \frac{19.6 \times 15 \times 10^{-3}}{2\pi \times 0.9} + \frac{0.3 \times 6.53 \times 15 \times 10^{-3}}{2\pi}$$

$$= 0.0567 \text{ [N·m]}$$

② Calculate the acceleration torque T_a [N·m]

②-1 Calculate the inertia J_L [kg·m²]
(Refer to the formula on page H-4)

Inertia of Ball Screw

$$J_B = \frac{\pi}{32} \cdot \rho \cdot L_B \cdot D_B^4$$

$$= \frac{\pi}{32} \times 7.9 \times 10^3 \times 600 \times 10^{-3} \times (15 \times 10^{-3})^4$$

$$= 0.236 \times 10^{-4} \text{ [kg·m}^2\text{]}$$

Inertia of Table and Load $J_T = m \left(\frac{P_B}{2\pi} \right)^2$

$$= 40 \times \left(\frac{15 \times 10^{-3}}{2\pi} \right)^2$$

$$= 2.28 \times 10^{-4} \text{ [kg·m}^2\text{]}$$

Inertia $J_L = J_B + J_T$

$$= 0.236 \times 10^{-4} + 2.28 \times 10^{-4} = 2.52 \times 10^{-4} \text{ [kg·m}^2\text{]}$$

②-2 Calculate the acceleration torque T_a [N·m]

$$T_a = \frac{(J_0 + J_L)}{9.55} \cdot \frac{N_M}{t_1}$$

$$= \frac{(J_0 + 2.52 \times 10^{-4})}{9.55} \times \frac{1200}{0.2}$$

$$= 628 J_0 + 0.158 \text{ [N·m]}$$

The formula for calculating acceleration torque with pulse speed is shown below. Calculation results are the same.

$$T_a = (J_0 + J_L) \cdot \frac{\pi \cdot \theta_s}{180^\circ} \cdot \frac{f_2 - f_1}{t_1}$$

$$= (J_0 + 2.52 \times 10^{-4}) \times \frac{\pi \times 0.72^\circ}{180^\circ} \times \frac{10000 - 0}{0.2}$$

$$= 628 J_0 + 0.158 \text{ [N·m]}$$

③ Calculate the required torque T_M [N·m]

Safety factor $S_f = 2$.

$$T_M = (T_L + T_a) S_f$$

$$= \{0.0567 + (628 J_0 + 0.158)\} \times 2$$

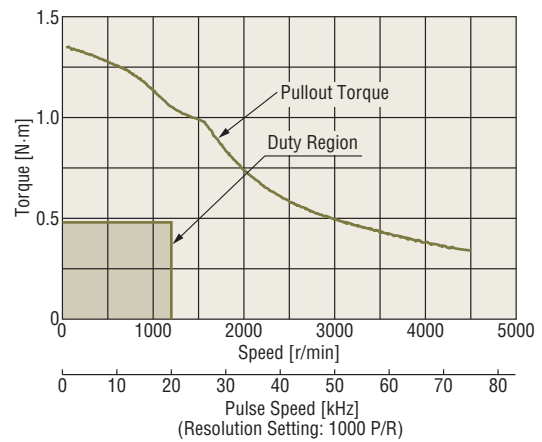
$$= 1256 J_0 + 0.429 \text{ [N·m]}$$

(5) Select a Motor

① Tentative motor selection

Product Name	Rotor Inertia [kg·m ²]	Required Torque [N·m]
AZM66AC	370×10^{-7}	0.48

② Determine the motor from the speed – torque characteristics
AZM66AC



Since the duty region of the motor (operating speed and required torque) falls within the pullout torque of the speed – torque characteristics, the motor can be used.

(6) Check the Inertia Ratio (Refer to page H-6)

$$\frac{J_L}{J_0} = \frac{2.52 \times 10^{-4}}{370 \times 10^{-7}} \cong 6.8$$

Since the inertia ratio of **AZM66AC** is 30 or less, if the calculated inertia ratio is 6.8, then operation of that motor is possible.

Selection Calculations

Motors

Linear & Rotary Actuators

Cooling Fans

Service Life

Stepper Motors

Servo Motors

Standard AC Motors

Brushless Motors/AC Speed Control Motors

Gearheads

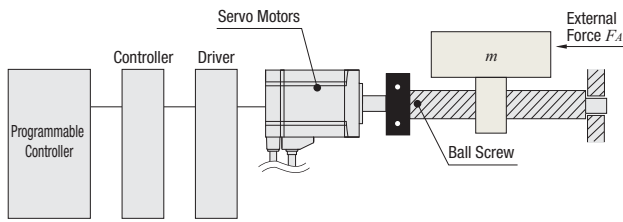
Linear & Rotary Actuators

Cooling Fans

Using Servo Motors

(1) Specifications and Operating Conditions of the Drive Mechanism

The following is an example of how to select a servo motor to drive a single axis table:



- Max. table speed $V_L = 0.2$ [m/s]
- Resolution $\Delta l = 0.02$ [mm]
- Motor power supply Single-Phase 115 VAC
- Total mass of table and load $m = 100$ [kg]
- External $F_A = 29.4$ [N]
- Friction coefficient of sliding surface $\mu = 0.04$
- Ball screw efficiency $\eta = 0.9$
- Internal friction coefficient of preload nut $\mu_0 = 0.3$
- Shaft diameter of ball screw $D_B = 25$ [mm]
- Overall length of ball screw $L_B = 1000$ [mm]
- Ball screw lead $P_B = 10$ [mm]
- Ball screw material Iron (Density $\rho = 7.9 \times 10^3$ [kg/m³])
- Operating cycle Operation for 2.1 seconds/stopped for 0.4 seconds (repeated)
- Acceleration/deceleration time $t_1 = t_3 = 0.1$ [s]

(2) Calculate the Required Resolution θ

Calculate the motor resolution from the resolution required for the table drive.

$$\theta = \frac{360^\circ \cdot \Delta l}{P_B} = \frac{360^\circ \times 0.02}{10} = 0.72^\circ$$

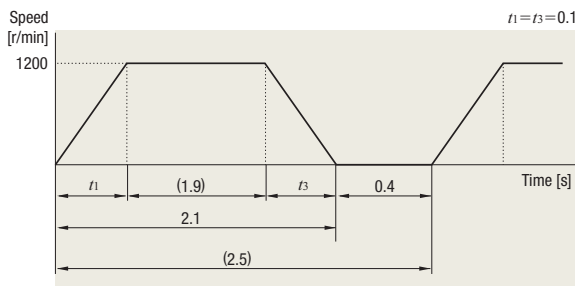
The resolution of the **NX** Series, $\theta_M = 0.36^\circ/\text{pulse}$ (factory setting) satisfies this requirement.

(3) Determine an Operating Pattern

Calculate the motor speed N_M from the formula below.

$$N_M = \frac{60 \cdot V_L}{P_B} = \frac{60 \times 0.2}{10 \times 10^{-3}} = 1200 \text{ [r/min]}$$

Determine the speed pattern using N_M , the operating cycle and the acceleration/deceleration time.



(4) Calculate the Load Torque T_L [N·m]

$$\begin{aligned} \text{Operation direction load } F &= F_A + m \cdot g (\sin \theta + \mu \cdot \cos \theta) \\ &= 29.4 + 100 \times 9.807 (\sin 0^\circ + 0.04 \cos 0^\circ) \\ &= 68.6 \text{ [N]} \end{aligned}$$

Load Torque of the Motor Shaft Conversion

$$\begin{aligned} T_L &= \frac{F \cdot P_B}{2\pi \cdot \eta} + \frac{\mu_0 \cdot F_0 \cdot P_B}{2\pi} \\ &= \frac{68.6 \times 10 \times 10^{-3}}{2\pi \times 0.9} + \frac{0.3 \times 22.9 \times 10 \times 10^{-3}}{2\pi} \\ &\approx 0.13 \text{ [N·m]} \end{aligned}$$

Here $F_0 = \frac{1}{3} F$ represents the ball screw preload.

(5) Calculate the Inertia J_L [kg·m²]

Inertia of Ball Screw

$$\begin{aligned} J_B &= \frac{\pi}{32} \cdot \rho \cdot L_B \cdot D_B^4 \\ &= \frac{\pi}{32} \times 7.9 \times 10^3 \times 1000 \times 10^{-3} \times (25 \times 10^{-3})^4 \\ &\approx 3.03 \times 10^{-4} \text{ [kg·m}^2\text{]} \end{aligned}$$

$$\begin{aligned} \text{Inertia of Table and Load } J_m &= m \left(\frac{P_B}{2\pi} \right)^2 \\ &= 100 \times \left(\frac{10 \times 10^{-3}}{2\pi} \right)^2 \\ &\approx 2.53 \times 10^{-4} \text{ [kg·m}^2\text{]} \end{aligned}$$

$$\begin{aligned} \text{Inertia } J_L &= J_B + J_m \\ &= 3.03 \times 10^{-4} + 2.53 \times 10^{-4} = 5.56 \times 10^{-4} \text{ [kg·m}^2\text{]} \end{aligned}$$

(6) Tentative Servo Motor Selection

Safety factor $S_f = 1.5$.

$$\begin{aligned} \text{Load torque } T_L &= S_f \cdot T_L \\ &= 1.5 \times 0.13 = 0.195 \text{ [N·m]} \end{aligned}$$

$$\text{Inertia } J_L = 5.56 \times 10^{-4} \text{ [kg·m}^2\text{]}$$

Therefore, select the servo motor which has a speed of 1200 [r/min], outputs the rated torque 0.195 [N·m] or more and whose permissible inertia is 5.56×10^{-4} [kg·m²] or more.

→ **NX620AA-3**

- Rated speed $N = 3000$ [r/min]
- Rated torque $T_M = 0.637$ [N·m]
- Rotor inertia $J_0 = 0.162 \times 10^{-4}$ [kg·m²]
- Permissible inertia $J = 8.1 \times 10^{-4}$ [kg·m²]
- Max. instantaneous torque $T_{MAX} = 1.91$ [N·m]
- is ideal.

(7) Calculate the Acceleration Torque T_a [N·m] and Deceleration Torque T_d [N·m]

Calculate the acceleration/deceleration torque using the formula below.

$$\begin{aligned} T_a (= T_d) &= \frac{(J_L + J_0) N_M}{9.55 t_1} \\ &= \frac{(5.56 \times 10^{-4} + 0.162 \times 10^{-4}) \times 1200}{9.55 \times 0.1} \approx 0.72 \text{ [N·m]} \end{aligned}$$

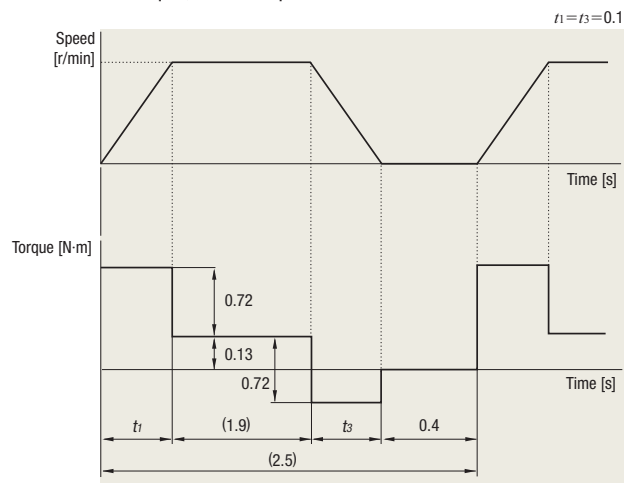
(8) Calculate the Required Torque T [N·m]

$$\begin{aligned} T &= T_a + T_L \\ &= 0.72 + 0.13 = 0.85 \text{ [N·m]} \end{aligned}$$

The required torque is less than the max. instantaneous torque of **NX620AA-3** of 1.91 [N·m], so the **NX620AA-3** can be used.

(9) Determine a Torque Pattern

Determine a torque pattern using operating cycle, acceleration/deceleration torque, load torque and acceleration time.



(10) Calculate the Effective Load Torque T_{rms} [N·m]

Calculate the effective load torque T_{rms} using the torque pattern and formula below.

$$T_{rms} = \sqrt{\frac{(T_a + T_L)^2 \cdot t_1 + T_L^2 \cdot t_2 + (T_d - T_L)^2 \cdot t_3}{t_f}}$$

$$= \sqrt{\frac{(0.72 + 0.13)^2 \times 0.1 + 0.13^2 \times 1.9 + (0.72 - 0.13)^2 \times 0.1}{2.5}}$$

$$\doteq 0.24 \text{ [N·m]}$$

Here, $t_1 + t_2 + t_3 = 2.1$ [s] from the operating cycle and $t_1 = t_3 = 0.1$ for acceleration and deceleration time. Therefore, $t_2 = 2.1 - 0.1 \times 2 = 1.9$ [s]

The ratio (effective load safety factor) of T_{rms} and the rating torque of servo motor T_M is expressed by the formula below.

$$\frac{T_M}{T_{rms}} = \frac{0.637}{0.24} = 2.65$$

Generally a motor can operate at an effective load safety factor of 1.5~2 or more.

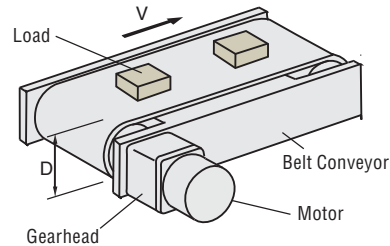
● Belt and Pulley Mechanism

When Using AC Motor

(1) Specifications and Operating Conditions of the Drive Mechanism

The following is an example of how to select an induction motor to drive a belt conveyor:

A motor that meets the following required specifications is selected.



Total mass of belt and load	$m_1 = 25$ [kg]
External force	$F_A = 0$ [N]
Friction coefficient of sliding surface	$\mu = 0.3$
Roller diameter	$D = 90$ [mm]
Roller mass	$m_2 = 1$ [kg]
Belt and roller efficiency	$\eta = 0.9$
Belt Speed	$V = 180$ [mm/s] $\pm 10\%$
Motor power supply	Single-Phase 230 VAC, 50 Hz
Operating time	8 hours operation per day

(2) Determine the Gear Ratio of Gearhead

$$\text{Gearhead Output Shaft Speed } N_G = \frac{V \cdot 60}{\pi \cdot D} = \frac{(180 \pm 18) \times 60}{\pi \times 90}$$

$$= 38.2 \pm 3.8 \text{ [r/min]}$$

Since the rated speed for an induction motor (4-pole) at 50 Hz is 1200~1300 [r/min], select a gearhead gear ratio within this range.

$$\text{Gearhead Gear Ratio } i = \frac{1200 \sim 1300}{N_G} = \frac{1200 \sim 1300}{38.2 \pm 3.8} = 28.5 \sim 37.8$$

Select a gear ratio of $i = 36$ from within this range.

(3) Calculate the Required Torque T_M [N·m]

$$\text{Friction Coefficient of Sliding Surface } F = F_A + m \cdot g (\sin \theta + \mu \cdot \cos \theta)$$

$$= 0 + 25 \times 9.807 (\sin 0^\circ + 0.3 \cos 0^\circ)$$

$$= 73.6 \text{ [N]}$$

$$\text{Load Torque } T_L = \frac{F \cdot D}{2 \cdot \eta} = \frac{73.6 \times 90 \times 10^{-3}}{2 \times 0.9} = 3.68 \text{ [N·m]}$$

Consider the safety factor $S_f = 2$.

$$T_L = T_L \cdot S_f = 3.68 \times 2 = 7.36 \text{ [N·m]}$$

Select the motor that satisfies the rated torque based on the calculation results so far (Gear ratio $i = 36$, load torque $T_L = 7.36$ [N·m]).

At this time, refer to the specifications table on page C-32 and tentatively select motor **5IK40GC-36**.

Selection Calculations

Motors

Linear & Rotary Actuators

Cooling Fans

Service Life

Stepper Motors

Servo Motors

Standard AC Motors

Brushless Motors/AC Speed Control Motors

Gearheads

Linear & Rotary Actuators

Cooling Fans

(4) Check the Inertia J [kg·m²]

$$\begin{aligned} \text{Inertia of Belt and Load } J_{m1} &= m_1 \left(\frac{\pi \cdot D}{2\pi} \right)^2 \\ &= 25 \times \left(\frac{\pi \times 90 \times 10^{-3}}{2\pi} \right)^2 \\ &= 507 \times 10^{-4} \text{ [kg·m}^2\text{]} \\ \text{Inertia of Roller } J_{m2} &= \frac{1}{8} \cdot m_2 \cdot D^2 \\ &= \frac{1}{8} \times 1 \times (90 \times 10^{-3})^2 \\ &= 10.2 \times 10^{-4} \text{ [kg·m}^2\text{]} \end{aligned}$$

Calculate the load inertia for the gearhead output shaft J .
Take into account that there are 2 rollers (J_{m2}).

$$\begin{aligned} J &= J_{m1} + 2J_{m2} \\ &= 507 \times 10^{-4} + 10.2 \times 10^{-4} \times 2 \\ &= 528 \times 10^{-4} \text{ [kg·m}^2\text{]} \end{aligned}$$

The value of the permissible inertia J_G for the **5IK40GC-36** can be found on the specifications table on page C-18.

$$J_G = 1426 \times 10^{-4} \text{ [kg·m}^2\text{]} \text{ (During instantaneous stop)}$$

Therefore, since $J < J_G$, the inertia is less than the permissible value, so there is no problem. Since the motor selected has a rated torque of 9.3 [N·m], which is larger than the actual load torque, the motor will operate at a higher speed than the rated speed.
Therefore, use the speed that is without load (approx. 1470 r/min) to calculate belt speed, and check whether the selected product meets the required specifications.

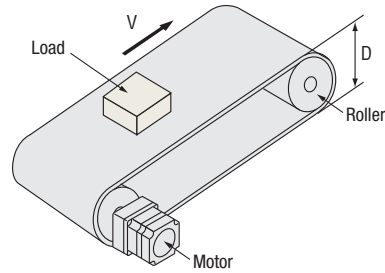
$$V = \frac{N_M \cdot \pi \cdot D}{60 \cdot i} = \frac{1470 \times \pi \times 90}{60 \times 36} = 192 \text{ [mm/s]} \quad N_M: \text{ Motor Speed}$$

This confirms that the motor meets the specifications.
Therefore, the **5IK40GC-36** motor is selected.

Using Brushless Motors

(1) Specifications and Operating Conditions of the Drive Mechanism

Here is an example of how to select a brushless motor to drive a belt conveyor.



Belt speed	$V = 0.05 \sim 1$ [m/s]
Motor power supply	Three-Phase 230 VAC
Belt conveyor drive	
Roller diameter	$D = 0.1$ [m]
Roller mass	$m_2 = 1$ [kg]
Total mass of belt and load	$m_1 = 7$ [kg]
External force	$F_A = 0$ [N]
Friction coefficient of sliding surface	$\mu = 0.3$
Belt and roller efficiency	$\eta = 0.9$

(2) Find the Required Speed Range

For the gear ratio, select 1:15 (speed range: 5.3~200) from the “Gearmotor – Torque Table of Combination Type” on page D-28 so that the minimum/maximum speed falls within the speed range.

$$\begin{aligned} N_G &= \frac{60 \cdot V_L}{\pi \cdot D} \quad N_G: \text{ Speed at the gearhead shaft} \\ \text{Belt speed } 0.015 \text{ [m/s]} &\dots\dots\dots \frac{60 \times 0.05}{\pi \times 0.1} = 9.55 \text{ [r/min]} \text{ (Minimum speed)} \\ 1 \text{ [m/s]} &\dots\dots\dots \frac{60 \times 1}{\pi \times 0.1} = 191 \text{ [r/min]} \text{ (Maximum speed)} \end{aligned}$$

(3) Calculate the Moment of Inertia J_G [kg·m²]

$$\begin{aligned} \text{Inertia of belt and load } J_{m1} &= m_1 \left(\frac{\pi \cdot D}{2\pi} \right)^2 = 7 \times \left(\frac{\pi \times 0.1}{2\pi} \right)^2 \\ &= 175 \times 10^{-4} \text{ [kg·m}^2\text{]} \\ \text{Inertia of roller } J_{m2} &= \frac{1}{8} \cdot m_2 \cdot D^2 \\ &= \frac{1}{8} \times 1 \times 0.1^2 = 12.5 \times 10^{-4} \text{ [kg·m}^2\text{]} \end{aligned}$$

The inertia J_G is calculated as follows:
Take into account that there are two rollers (J_{m2}).
 $J_G = J_{m1} + 2J_{m2} = 175 \times 10^{-4} + 12.5 \times 10^{-4} \times 2 = 200 \times 10^{-4} \text{ [kg·m}^2\text{]}$

From the specifications on page D-29, the permissible load inertia of **BLM5120HP-15S/BMUD120-C2** is $225 \times 10^{-4} \text{ [kg·m}^2\text{]}$.

(4) Calculate the Load Torque T_L [N·m]

$$\begin{aligned} \text{Friction coefficient of sliding surface } F &= F_A + m \cdot g (\sin \theta + \mu \cdot \cos \theta) \\ &= 0 + 7 \times 9.807 (\sin 0^\circ + 0.3 \times \cos 0^\circ) \\ &= 20.6 \text{ [N]} \\ \text{Load torque } T_L &= \frac{F \cdot D}{2 \cdot \eta} = \frac{20.6 \times 0.1}{2 \times 0.9} = 1.15 \text{ [N·m]} \end{aligned}$$

Select **BLM5120HP-15S/BMUD120-C2** from the “Gearmotor – Torque Table of Combination Type” on page D-28.
Since the permissible torque is 5.2 [N·m], the safety factor is $T_M / T_L = 5.2 / 1.15 \doteq 4.5$.
Usually, a motor can operate at the safety factor of 1.5~2 or more.

● Index Mechanism

(1) Specifications and Operating Conditions of the Drive Mechanism

G geared stepper motors are ideal for systems with big inertia, such as index tables.

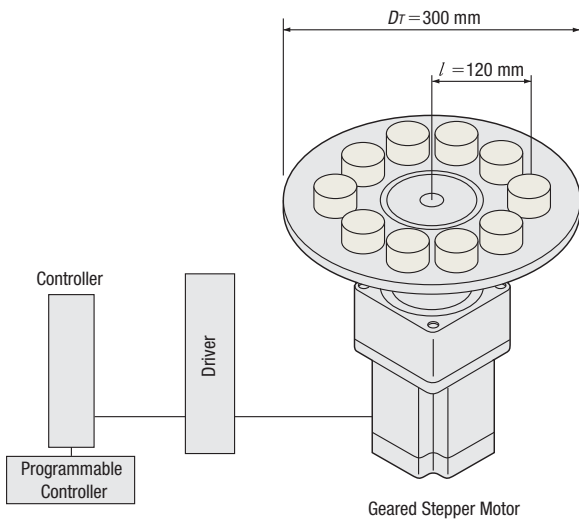


Table diameter	$D_T = 300$ [mm]
Table thickness	$L_T = 5$ [mm]
Table material	Aluminum (Density $\rho = 2.8 \times 10^3$ [kg/m ³])
Load diameter	$D_W = 40$ [mm]
Load thickness	$L_W = 30$ [mm]
Number of loads	10 (1 every 36°)
Load material	Aluminum (Density $\rho = 2.8 \times 10^3$ [kg/m ³])
Distance from central axis of table to central axis of load	$l = 120$ [mm]
Positioning angle	$\theta = 36^\circ$
Positioning time	$t_0 = 0.25$ seconds

The **RKII** Series **PS** geared type (Gear ratio 10, resolution/pulse = 0.072°) can be used.

The **PS** geared type can be used at the maximum starting/stopping torque in the inertial drive.

Gear ratio	$i = 10$
Resolution/pulse	$\theta_s = 0.072^\circ$

(2) Determine the Operating Pattern (Refer to formula on page H-5)

① Calculate the number of operating pulses A [Pulse]

$$A = \frac{\theta}{\theta_s} = \frac{36^\circ}{0.072^\circ} = 500 \text{ [Pulse]}$$

② Determine the acceleration (deceleration) time t_1 [s]

An acceleration (deceleration) time of 25% of the positioning time is appropriate.

Here, we shall let

$$t_1 = 0.1 \text{ [s]}$$

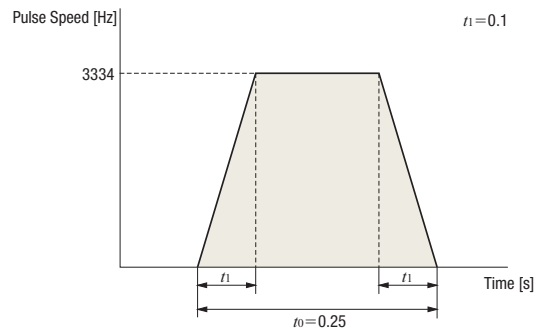
③ Calculate the operating pulse speed f_2 [Hz].

$$f_2 = \frac{A}{t_0 - t_1} = \frac{500}{0.25 - 0.1} \approx 3334 \text{ [Hz]}$$

④ Calculate the operating speed N_M [r/min].

$$N_M = \frac{\theta_s}{360^\circ} \cdot f_2 \cdot 60 = \frac{0.072^\circ}{360^\circ} \times 3334 \times 60 \approx 40 \text{ [r/min]}$$

The permissible speed range for the **PS** geared motor with a gear ratio of 10 is 0~300 [r/min].



(3) Calculate the Required Torque T_M [N·m] (Refer to page H-5)

① Calculate the load torque T_L [N·m]

Friction load is negligible and therefore omitted. Load torque is assumed as 0.

$$T_L = 0 \text{ [N·m]}$$

② Calculate the acceleration torque T_a [N·m]

②-1 Calculate the inertia J_L [kg·m²]

(Refer to page H-4 for the formula)

$$\begin{aligned} \text{Inertia of Table } J_T &= \frac{\pi}{32} \rho \cdot L_T \cdot D_T^4 \\ &= \frac{\pi}{32} \times 2.8 \times 10^3 \times (5 \times 10^{-3}) \times (300 \times 10^{-3})^4 \\ &= 1.11 \times 10^{-2} \text{ [kg·m}^2\text{]} \end{aligned}$$

$$\begin{aligned} \text{Inertia of Load } J_{W1} &= \frac{\pi}{32} \rho \cdot L_W \cdot D_W^4 \\ \text{(Around Center of Load Rotation)} \\ &= \frac{\pi}{32} \times 2.8 \times 10^3 \times (30 \times 10^{-3}) \times (40 \times 10^{-3})^4 \\ &= 0.211 \times 10^{-4} \text{ [kg·m}^2\text{]} \end{aligned}$$

$$\begin{aligned} \text{Load Mass } m_W &= \frac{\pi}{4} \rho \cdot L_W \cdot D_W^2 \\ &= \frac{\pi}{4} \times 2.8 \times 10^3 \times (30 \times 10^{-3}) \times (40 \times 10^{-3})^2 \\ &= 0.106 \text{ [kg]} \end{aligned}$$

Inertia of load J_W [kg·m²] relative to the center of rotation can be calculated from distance l [mm] between the center of load and center of table rotation, mass of load m_W [kg], and inertia of load around the center of load J_{W1} [kg·m²].

Since the number of loads, $n = 10$ [pcs],

$$\begin{aligned} \text{Inertia of Load } J_W &= n (J_{W1} + m_W \cdot l^2) \\ \text{(Around Center of Table Rotation)} \\ &= 10 \times \{(0.211 \times 10^{-4}) + 0.106 \times (120 \times 10^{-3})^2\} \\ &= 1.55 \times 10^{-2} \text{ [kg·m}^2\text{]} \end{aligned}$$

$$\begin{aligned} \text{Inertia } J_L &= J_T + J_W \\ &= (1.11 + 1.55) \times 10^{-2} \\ &= 2.66 \times 10^{-2} \text{ [kg·m}^2\text{]} \end{aligned}$$

Selection Calculations

Motors

Linear & Rotary Actuators

Cooling Fans

Service Life

Stepper Motors

Servo Motors

Standard AC Motors

Brushless Motors/AC Speed Control Motors

Gearheads

Linear & Rotary Actuators

Cooling Fans

②-2 Calculate the acceleration torque T_a [N·m]
Calculate the acceleration torque of the output gear shaft.

$$T_a = \frac{(J_0 \cdot i^2 + J_L)}{9.55} \cdot \frac{N_M}{t_1}$$

$$= \frac{(J_0 \times 10^2 + 2.66 \times 10^{-2})}{9.55} \cdot \frac{40}{0.1}$$

$$= 4.19 \times 10^3 J_0 + 1.11 \text{ [N·m]}$$

The formula for calculating acceleration torque with pulse speed is shown below. Calculation results are the same.

$$T_a = (J_0 \cdot i^2 + J_L) \cdot \frac{\pi \cdot \theta_s}{180^\circ} \cdot \frac{f_2 - f_1}{t_1}$$

$$= (J_0 \times 10^2 + 2.66 \times 10^{-2}) \times \frac{\pi \times 0.072^\circ}{180^\circ} \times \frac{3334 - 0}{0.1}$$

$$= 4.19 \times 10^3 J_0 + 1.11 \text{ [N·m]}$$

③ Calculate the required torque T_M [N·m]
Calculate safety factor $S_f = 2$.

$$T_M = (T_L + T_a) S_f$$

$$= \{0 + (4.19 \times 10^3 J_0 + 1.11)\} \times 2$$

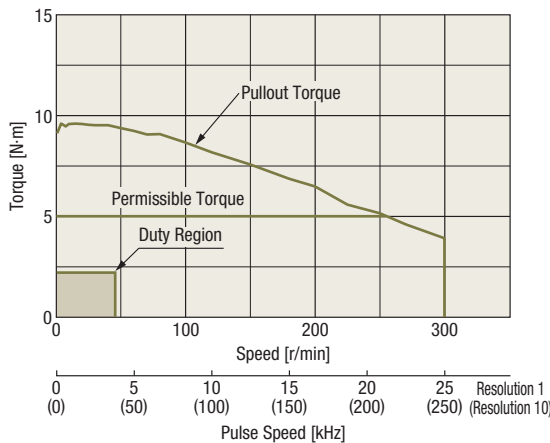
$$= 8.38 \times 10^3 J_0 + 2.22 \text{ [N·m]}$$

(4) Select a Motor

① Tentative motor selection

Product Name	Rotor Inertia [kg·m ²]	Required Torque [N·m]
RKS566ACD-PS10-3	270×10^{-7}	2.45

② Determine the motor from the speed – torque characteristics
RKS566ACD-PS10-3



The **PS** geared type can use acceleration torque up to the maximum torque range to start and stop inertia loads. Since the duty region of the motor (operating speed and required torque) falls within the pullout torque of the speed – torque characteristics, the motor can be used. Check the inertia ratio and acceleration/deceleration rate to ensure that the selection is correct.

(5) Check the Inertia Ratio (Refer to page H-6)

The **RKS566ACD-PS10-3** has a gear ratio of 10, therefore, the inertia ratio is calculated as follows.

$$\frac{J_L}{J_0 \cdot i^2} = \frac{2.66 \times 10^{-2}}{270 \times 10^{-7} \times 10^2}$$

$$\approx 9.85$$

RKS566ACD-PS10-3 motor is the equivalent of the **RKS566ACD-3** motor. Since the inertia ratio is 10 or less, if the inertia ratio is 9.85, motor operation is deemed to be possible.

(6) Check the Acceleration/Deceleration Rate (Refer to page H-6)

Note when calculating that the units for acceleration/deceleration rate T_R are [ms/kHz].

$$T_R = \frac{t_1}{f_2 - f_1} = \frac{0.1 \text{ [s]}}{3334 \text{ [Hz]} - 0 \text{ [Hz]}}$$

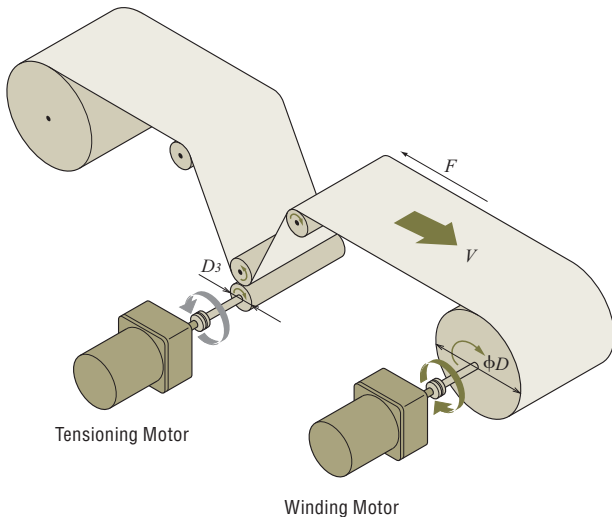
$$= \frac{100 \text{ [ms]}}{3.334 \text{ [kHz]} - 0 \text{ [kHz]}}$$

$$\approx 30 \text{ [ms/kHz]}$$

The **RKS566ACD-PS10-3** motor is the equivalent of the **RKS566ACD-3** and it has an acceleration/deceleration rate of 20 [ms/kHz] or more. Since the acceleration/deceleration rate is 30 [ms/kHz] the operation of the motor is possible.

● Winding Mechanism

This example demonstrates how to select winding equipment when a torque motor is used.



(1) Specifications and Operating Conditions of the Drive Mechanism

- Winding roller diameter ϕD
- Diameter at start of winding $D_1 = 15$ [mm] = 0.015 [m]
- Diameter at end of winding $D_2 = 30$ [mm] = 0.03 [m]
- Tensioning roller diameter $D_3 = 20$ [mm] = 0.02 [m]
- Winding speed $V = 47$ [m/min] (constant)
- Tension $F = 4$ [N] (constant)
- Power Single-phase 230 VAC
- Operating time Continuous

(2) Select a Winding Motor

In general, a winding motor must satisfy the following conditions:

- Able to provide a constant winding speed
- Able to apply a constant tension to prevent slackening of material

To meet the above conditions, the following points must be given consideration when selecting a motor:

- Since the winding diameter is different between the start and end of winding, the motor speed must be varied according to the winding diameter to keep the winding speed constant.
- If the tension is constant, the required motor torque is different between the start and end of winding. Accordingly, the torque must be varied according to the winding diameter.

Torque motors have ideal characteristics to meet these conditions.

① Calculate the Required Speed

Calculate the speed N_1 required at the start of winding.

$$N_1 = \frac{V}{\pi \cdot D_1} = \frac{47}{\pi \times 0.015} = 997.9 \text{ [r/min]} \doteq 1000 \text{ [r/min]}$$

Calculate the speed N_2 required at the end of winding.

$$N_2 = \frac{V}{\pi \cdot D_2} = \frac{47}{\pi \times 0.03} = 498.9 \text{ [r/min]} \doteq 500 \text{ [r/min]}$$

② Calculate the Required Torque

Calculate the torque T_1 required at the start of winding.

$$T_1 = \frac{F \cdot D_1}{2} = \frac{4 \times 0.015}{2} = 0.03 \text{ [N}\cdot\text{m]}$$

Calculate the torque T_2 required at the end of winding.

$$T_2 = \frac{F \cdot D_2}{2} = \frac{4 \times 0.03}{2} = 0.06 \text{ [N}\cdot\text{m]}$$

This winding motor must meet the following conditions:

Start of Winding:

Speed $N_1 = 1000$ [r/min], Torque $T_1 = 0.03$ [N·m]

End of Winding:

Speed $N_2 = 500$ [r/min], Torque $T_2 = 0.06$ [N·m]

③ Select a Motor

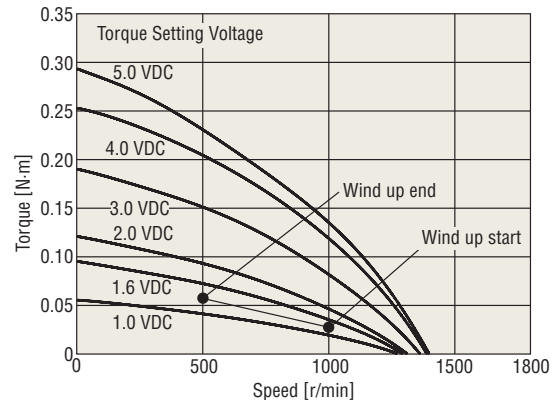
Check the Speed – Torque Characteristics

Select a motor that meets the required conditions specified above.

If the required conditions are plotted on the Speed – Torque Characteristics for **TM410C-AE**, it is clear that the conditions roughly correspond to the characteristics at a torque setting voltage of 1.9 VDC.

Speed – Torque Characteristics

TM410C-AE (230 VAC 50 Hz)



Check the Operation Time

TM410C-AE has a five-minute rating when the voltage is 5.0 VDC and a continuous rating when it is 1.6 VDC. Under the conditions given here, the voltage is 1.6 VDC max., meaning that the motor can be operated continuously.

Note

- If a torque motor is operated continuously in a winding application, select conditions where the service rating of the torque motor remains continuous.

(3) Select a Tensioning Motor

If tension is not applied, the material slackens as it is wound and cannot be wound neatly. Torque motors also have reverse-phase brake characteristics and can be used as tensioning motors. How to select a tensioning motor suitable for the winding equipment shown on page H-15 is explained below.

① Calculate the Required Speed N_3

$$N_3 = \frac{V}{\pi \cdot D_3} = \frac{47}{\pi \times 0.02} = 748.4 \text{ [r/min]} \doteq 750 \text{ [r/min]}$$

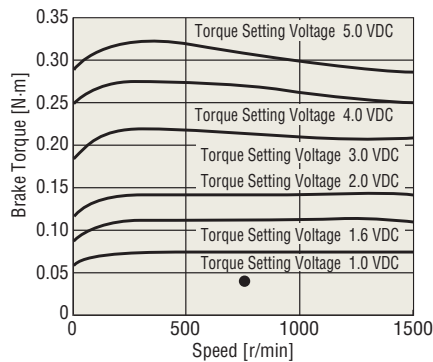
② Calculate the Required Torque T_3

$$T_3 = \frac{F \cdot D_3}{2} = \frac{4 \times 0.02}{2} = 0.04 \text{ [N}\cdot\text{m]}$$

③ Select a Motor

Select a motor that meets the required conditions specified above. If the required conditions are plotted on the speed – brake torque characteristics* for the **TM410C-AE** reverse-phase brake, it is clear that the conditions roughly correspond to the characteristics at a torque setting voltage of 1.0 VDC.

Speed – Brake Torque Characteristics with Reverse-Phase Brake

**Note**

- If a torque motor is operated continuously in a brake application, how much the motor temperature rises varies depending on the applicable speed and torque setting voltage. Be sure to keep the temperature of the motor case at 90°C max.

From the above checks, the **TM410C-AE** can be used both as a winding motor and tensioning motor.

*Please contact the nearest Oriental Motor sales office or customer support center for information on the speed – brake torque characteristics of each product.