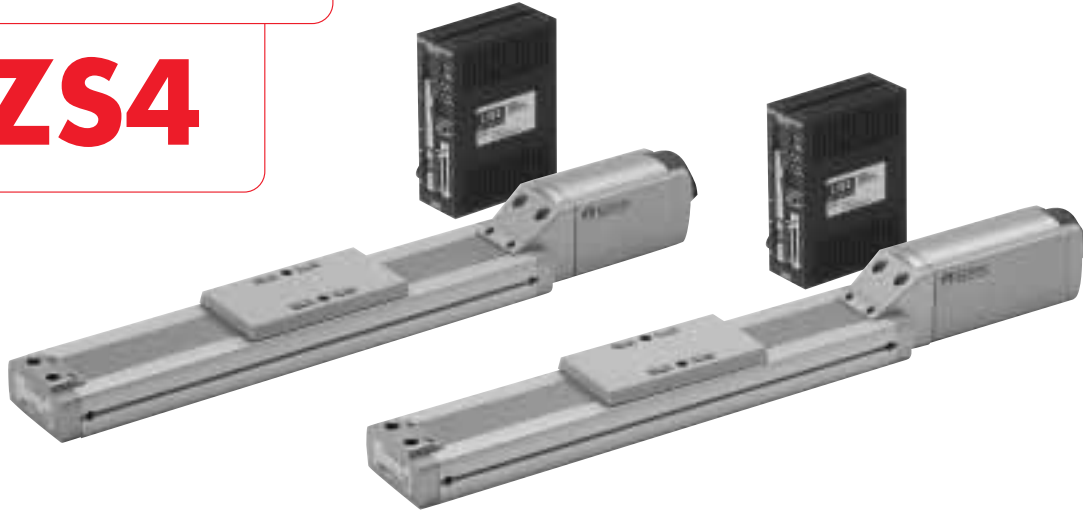


EZS Series

EZS4



Specifications

Model	Incremental Type	EZS4-□CI				EZS4-□MCI								
	Absolute Type	EZS4-□CA				EZS4-□MCA								
Motor Type	Stepping Motor with Encoder													
Drive Method	Ball Screw													
Electromagnetic Brake	Not equipped													
Speed Range	mm/s	~100	~200	~300	~100	~200	~300							
Max. Transportable Mass	kg	Horizontal Direction		Vertical Direction		Horizontal Direction		Vertical Direction						
		15	10	5	—	—	—	4.5	4	2				
Max. Acceleration	m/s ²	Horizontal Direction		Vertical Direction		Horizontal Direction		Vertical Direction						
		—	—	2	—	—	—	2	2	—				
Max. Thrust Force	N	45	4.5	40	4	23	2.3	45	4.5	40	4	23	2.3	
	kgf													
Max. Holding Brake Force	N	kgf	Power ON		Power OFF		Electromagnetic Brake							
			45	4.5	—	—	45	4.5	—	—				
			—	—	—	—	45	4.5	—	—				
Repetitive Positioning Accuracy	mm	±0.02												
Resolution	mm	0.015												
Lead	mm	12												
Stroke	mm	50, 100, 150, 200, 250, 300, 400, 500												
Mass of Linear Slide	kg	Stroke	50		100		150		200		250		300	
			2.3 (2.5)	100 : 2.5 (2.7)	150 : 2.7 (2.9)	200 : 2.9 (3.1)	250 : 3.1 (3.3)	300 : 3.3 (3.5)	400 : 3.7 (3.9)	500 : 4.1 (4.3)				
Ambient Temperature	°C	0~+40 (Nonfreezing)												

● See page 52 for the specification and dimensions of the controller.

General Specifications

Item	Specification
Insulation Resistance	100 MΩ minimum when measured by a DC 500 V megger between the following places. <ul style="list-style-type: none"> Windings — Case Case — Windings of electromagnetic brake (Only for electromagnetic brake equipped model)
Dielectric Strength	Sufficient to withstand the following for one minute. <ul style="list-style-type: none"> Windings — Case AC 0.5 kV 50 Hz Case — Windings of electromagnetic brake AC 0.5 kV 50 Hz (Only for electromagnetic brake equipped model)

Linear Slide/Controller Combinations

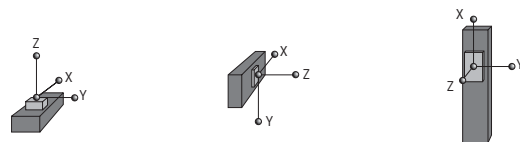
Type	Electromagnetic Brake	Model	Linear Slide Model	Controller Model
Incremental Type	Not equipped	EZS4-□CI	EZS4-□	EZMC36I
	Equipped	EZS4-□MCI	EZS4-□M	
Absolute Type	Not equipped	EZS4-□CA	EZS4-□	EZMC36A
	Equipped	EZS4-□MCA	EZS4-□M	

*The box (□) in the model name and linear slide model name represents the code for stroke length.

Allowable Overhung Length (mm)

* The length from the center of load's mounting surface to the center of gravity of the object being carried.

- Horizontal Installation
- Wall Mount Installation
- Vertical Installation



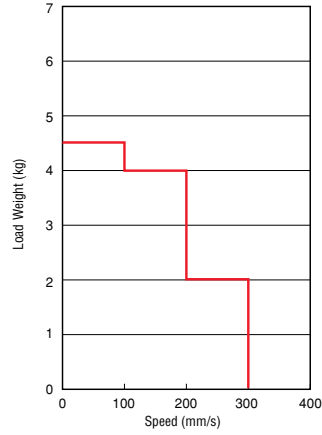
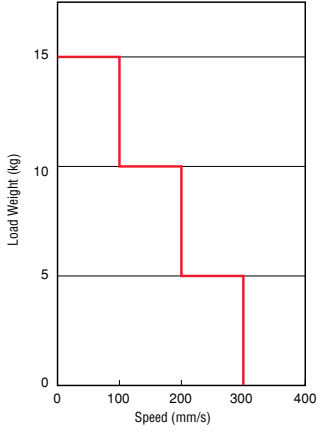
Carried Weight	X	Y	Z	Carried Weight	X	Y	Z	Carried Weight	X	Y	Z
5kg	113	135	300	5kg	28	135	237	2kg	230	57	230
10kg	51	67	252	10kg	14	67	99	4kg	102	29	102
15kg	31	45	150	15kg	9	45	53	4.5kg	87	25	87

The values shown in the tables are for uni-axial loading. For multi-axis loading please contact an Oriental Motor representative for assistance.

Correlation Diagram of Speed and Load Weight

● Horizontal Direction

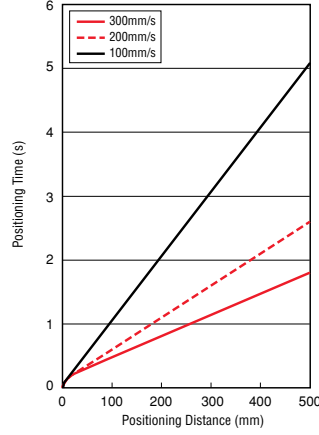
● Vertical Direction



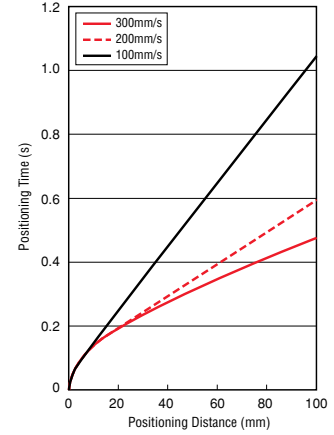
Minimum Positioning Time

Acceleration: 2 m/s² Starting Speed: 6 mm/s

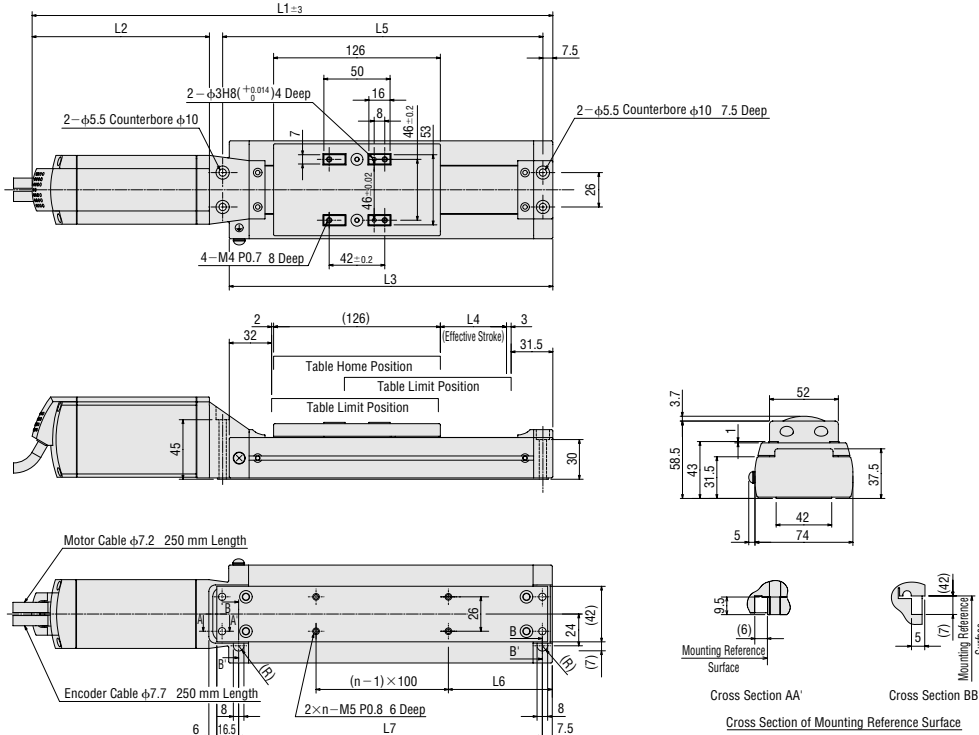
● Horizontal Direction/ Vertical Direction



Enlargement of Positioning Distance under 100 mm



Dimensions unit: mm



Linear Slide Model	L1	L2	L3	L4	L5	L6	L7	n
EZS4-05	393.5	134	244.5	50	242	78.5	229.5	2
EZS4-05M	423.5	164						
EZS4-10	443.5	134	294.5	100	292	53.5	279.5	3
EZS4-10M	473.5	164						
EZS4-15	493.5	134	344.5	150	342	78.5	329.5	3
EZS4-15M	523.5	164						
EZS4-20	543.5	134	394.5	200	392	53.5	379.5	4
EZS4-20M	573.5	164						
EZS4-25	593.5	134	444.5	250	442	78.5	429.5	4
EZS4-25M	623.5	164						
EZS4-30	643.5	134	494.5	300	492	53.5	479.5	5
EZS4-30M	673.5	164						
EZS4-40	743.5	134	594.5	400	592	53.5	579.5	6
EZS4-40M	773.5	164						
EZS4-50	843.5	134	694.5	500	692	53.5	679.5	7
EZS4-50M	873.5	164						